

## REACH Remote Access Setup Guide

GTI-PM-018-0319-GB

# PRECISION IRRIGATION CONTROL SYSTEMS

For Golf, Sportsturf & Landscape applications



DESIGNERS AND MANUFACTURERS OF



## Introduction

GTI REACH Remote Access is used to communicate with the GTI Central (PC computer EC tablet). The Central must be connected to the internet using a landline, Wi-Fi or mobile connection.

Some typical scenarios to control the GTI-PC or GTI-EC software from anywhere are:

- To start testing or irrigating stations from anywhere onsite
- To control the irrigation from an office or home environment

The GTI REACH access software can be installed on a multitude of different devices (Windows computer, iPad, Android device, etc.).



Note that multiple users can be logged on at the same time. If more than one person in your organisation has been given login details, then this needs to be managed to avoid conflict.

## Your remote-control account details

If the computer or tablet was configured by Bailoy, the default account details can be found on the Remote Access credential document IN-DX-ST-059 (like the example below in table 1) supplied with your agreement pack.

If these have been changed at any time by you or your ASR / AST, you will need to replace the default credentials with the new ones

Ref	Item	Example details
1	REACH User Name	Bailoy123@outlook.com
2	GTI Central User Name	Golf 121
3	GTI Central Password	Golf 121

Table 1

You will need to download and install the access software. The version to download depends on the device you wish to use. See the following web page for information:

<https://www.realvnc.com/en/connect/download/viewer/>

Click on the link of your preferred device:

Link	Description
<b>Windows</b>	Click the Windows link to download and install the viewer
<b>One of the other links</b>	Android, IOS (iPad and iPhone), etc. Click the link to learn how to download the app on your preferred device

Table 2

## Logging on

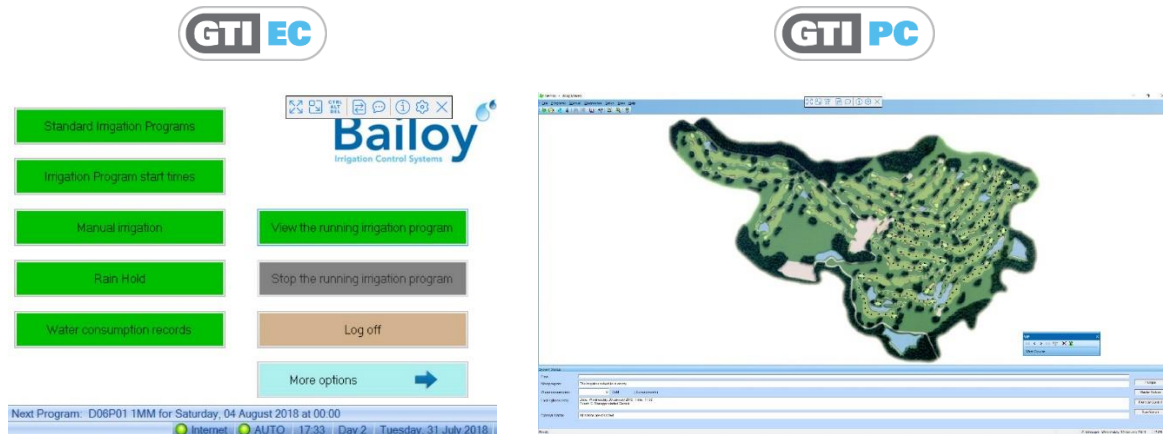
1. Start the app
2. A window opens. An icon representing your GTI system is shown on the right-hand side
3. Double click on the icon
4. The **Authentication** windows opens
5. Enter the **Central username** and **password** (See item 2 and 3 in **Table 1**)



Optionally check the remember password option.

**By doing this, a level of additional security has been overridden and unauthorised users may now be able to access the GTI system if your device is compromised.**

The following pictures show the GTI software from a remote screen:



The REACH toolbar is located above the Bailoy logo

The REACH toolbar is located top centre

Figure 1

The toolbar (Located just above the Bailoy logo) can be brought into view by swiping down with 3 fingers (iPad or iPhone) or by pointing the mouse to the top middle of the screen (Windows).

### Using the remote on a device with a touch display

The remote display is configured to use the mouse by default. This is not very practical for touch displays. For example, one must move the mouse cursor above a button before it can be tapped.

On your Remote Viewer, tap the "I" on the **toolbar** (The white bar in the top of Figure 1, note the bar may look differently depending on the selected device). A window with all the settings opens. Select **Interaction** and set it to **Touch panel**. Tap **Close** in the top right of the window to return to the software.

### Logging off

It is advisable to log off when remote control is no longer required.



This is particularly important if you are using a mobile connection in order to save your data allowance.

### Security



If you consider sharing the remote facilities with your staff or contractors working on site, then you need to be aware that all content stored on the computer or tablet needs to be considered shared information.

You are advised not to store sensitive data on your devices.

### Adding or deleting a device from the account

To add a new device or to delete an existing device from your account, call Bailoy Support.

*For full terms and conditions of REACH remote access, see document PSI-041. EX-DX-SA-041*



**BAILOY PRODUCTS LIMITED.**

The Old Forge, High Street,  
Harmondsworth Village, Middlesex,  
UB7 0AQ, United Kingdom

T: +44 (0)208 897 0125  
E: [info@bailoy.com](mailto:info@bailoy.com)  
W: [bailoy.com](http://bailoy.com)